

Changing Times, Changing Places

The streets of Wrexham changed greatly during the twentieth century. These images record just a few of those changes. How many places do you recognise?



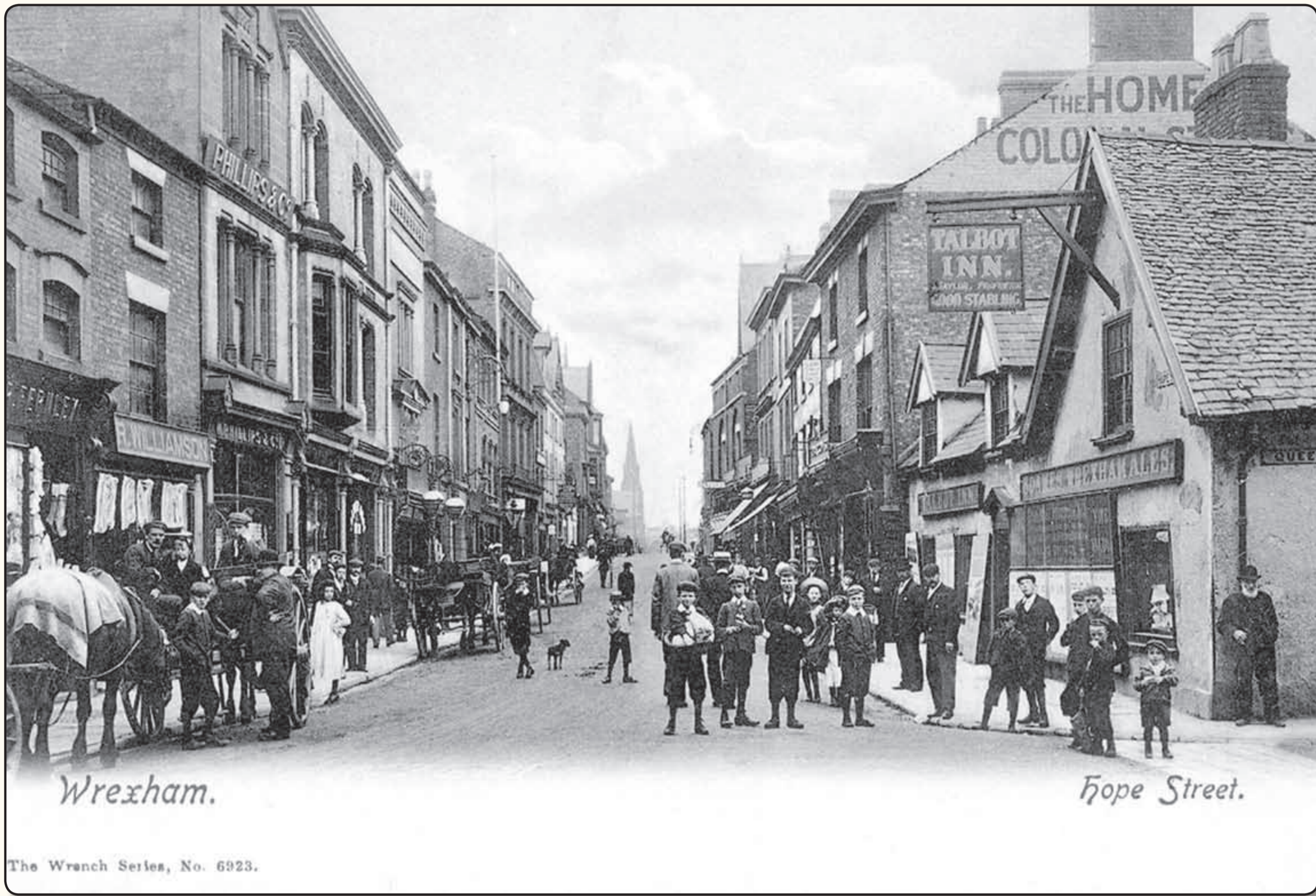
Then: The old Hand Inn and the Town Hall.
Now: Looking up Town Hill towards Burtons.

Ddoe: Yr hen Hand Inn a Neuadd y Dref.
Heddiw: Edrych i fyny Allt y Dref i gyfeiriad Burtons.



Then: Taxi cabs waiting in Brook Street.
Now: Looking towards St Giles's Way.

Ddoe: Tacsis yn aros yng Nghan yr Afon.
Heddiw: Edrych tuag at Rodfa San Silyn.



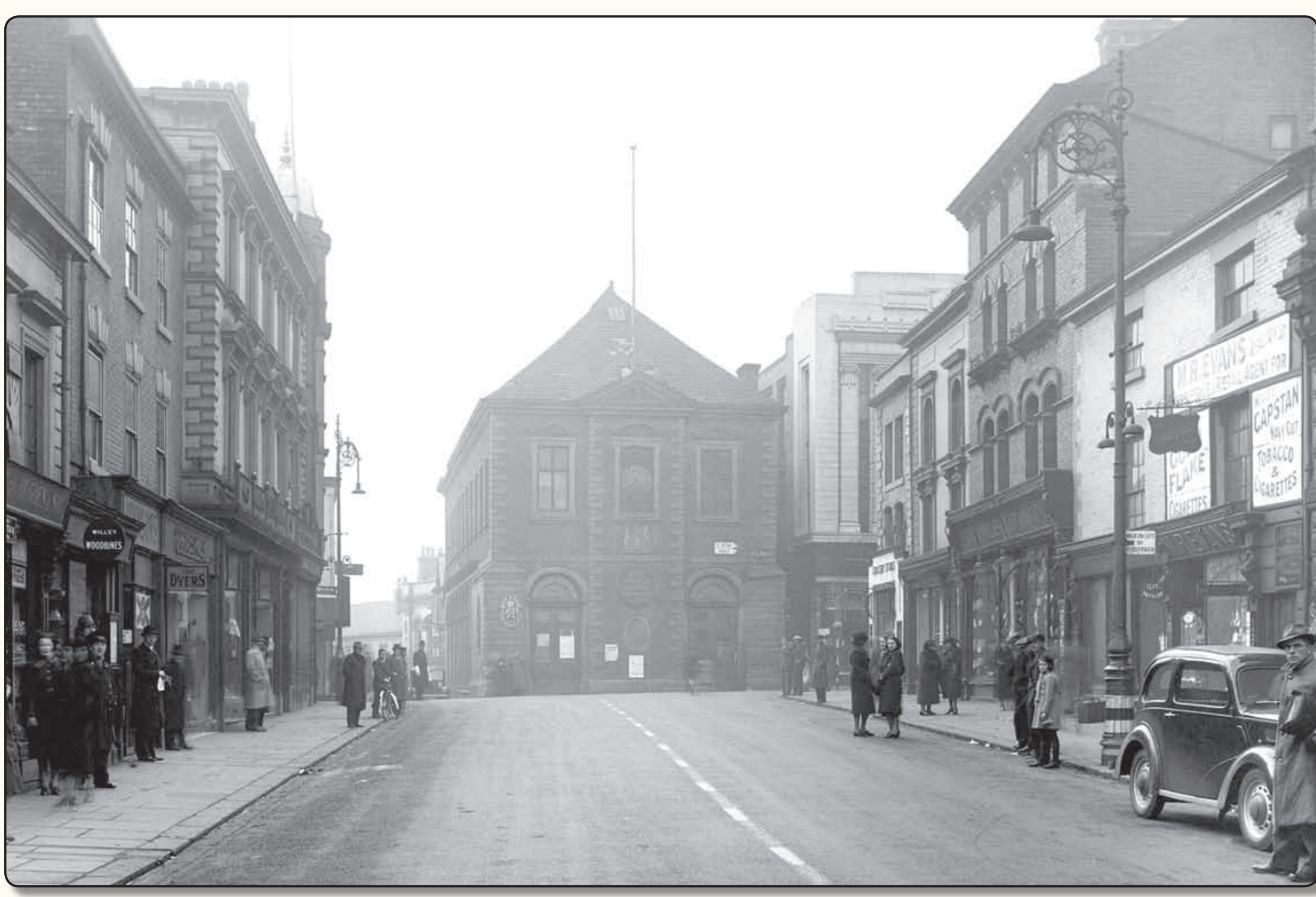
Then: Hope Street, looking west.
Now: Hope Street, looking from outside Next.

Ddoe: Stryt yr Hôb, yn edrych tua'r gorllewin.
Heddiw: Stryt yr Hôb, o'r tu allan i Next



Then: Wrexham Infirmary.
Now: North Wales School of Art & Design.

Ddoe: Clafdy Wrecsam.
Heddiw: Ysgol Gelf a Dylunio Gogledd Cymru.

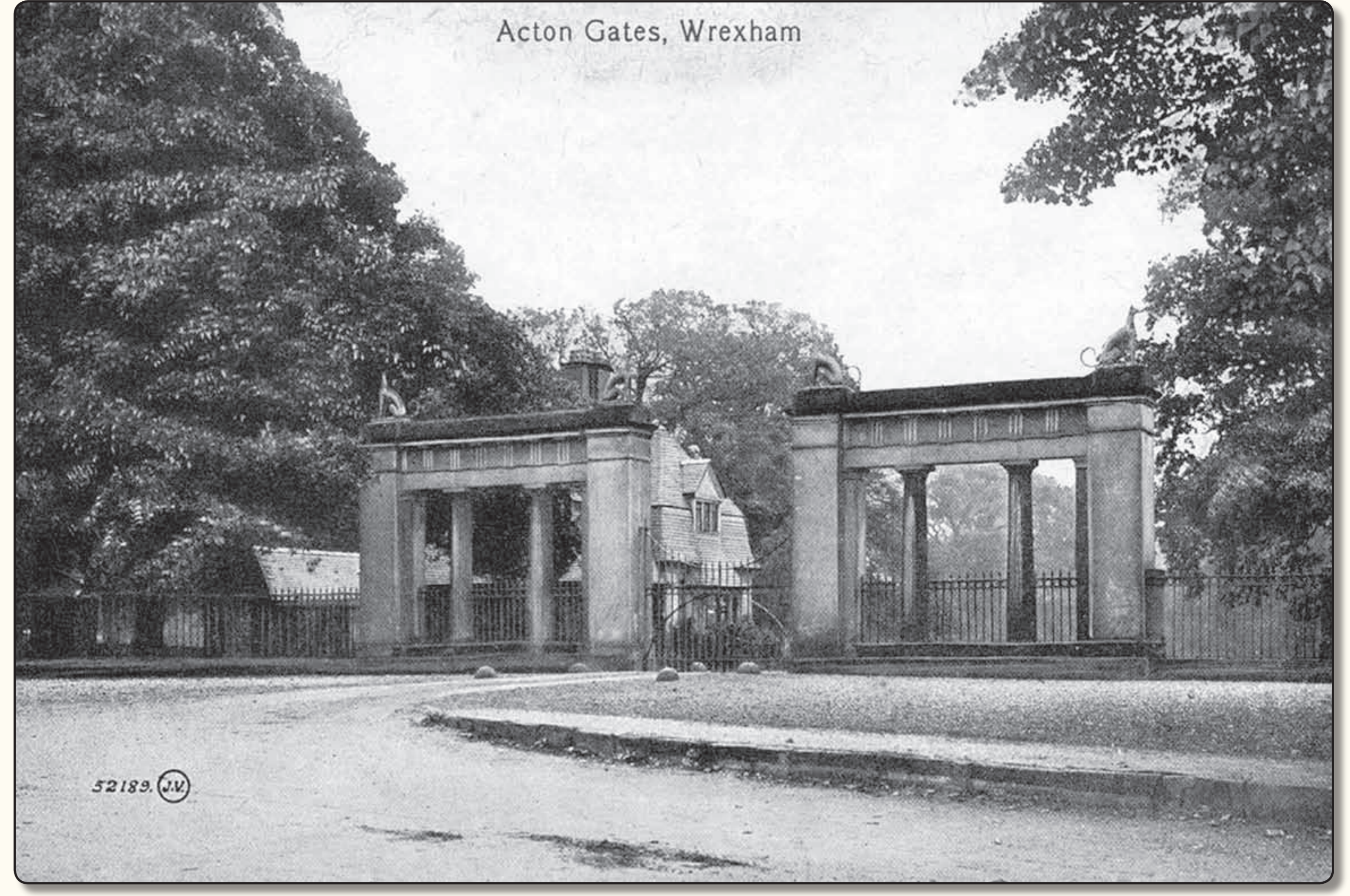


Then: The Town Hall from High Street.
Now: Demolished to improve traffic flow.

Ddoe: Neuadd y Dref o'r Stryt Fawr.
Heddiw: Wedi'i dymchwel i wella llif traffig.

Amserau'n Newid, Lleoedd yn Newid

Newidiodd strydoedd Wrecsam yn fawr yn ystod yr ugeinfed ganrif. Mae'r delweddau hyn yn cofnodi ychydig o'r newidiadau hynny. Faint o lefydd sy'n gyfarwydd i chi?



Then: The gates to Acton Park and Acton Hall.
Now: The Four Dogs, Chester Road.

Ddoe: Clwydi Parc Acton a Phlas Acton.
Heddiw: The Four Dogs, Ffordd Caer.



Then: Church House, County Buildings & the Catholic Cathedral.
Now: The insurance brokers', Wrexham County Borough Museum and the Catholic Cathedral.

Ddoe: Tŷ'r Eglwys, Adeiladau'r Sir a'r Eglwys Gadeiriol Babyddol.
Heddiw: Broceriaid yswiriant, Amgueddfa Bwrdeistref Sirol Wrecsam a'r Eglwys Gadeiriol Babyddol.



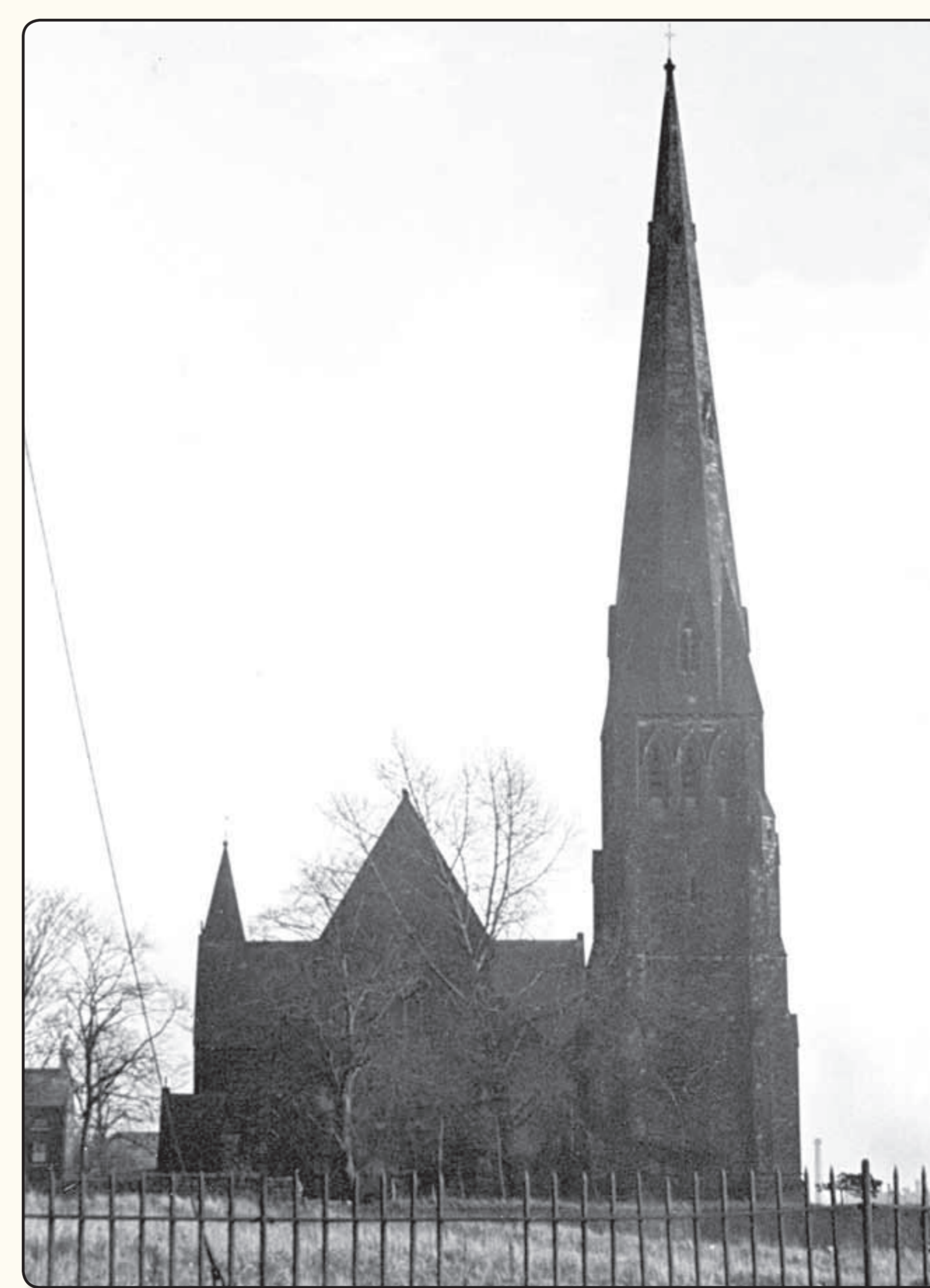
Then: Hope Street, looking east.
Now: Hope Street from outside Woolworths or Boots.

Ddoe: Stryt yr Hôb, yn edrych tua'r dwyrain.
Heddiw: Stryt yr Hôb o'r tu allan i Woolworths neu Boots.



Then: Yorke Street, looking up to the Wynnstey Arms.
Now: Widened and the buildings adjoining the churchyard demolished.

Ddoe: Stryt Yorke, yn edrych i gyfeiriad y Wynnstey Arms.
Heddiw: Wedi'i lledu ar ôl dymchwel yr adeiladau ar bwys mynwent yr eglwys.



Then: St Mark's Church, St Mark's Road.
Now: NCP multi-storey car park, St Mark's Road.

Ddoe: Eglwys St Marc, Ffordd Sant Marc.
Heddiw: Maes parcio aml-lawr NCP, Ffordd Sant Marc.

